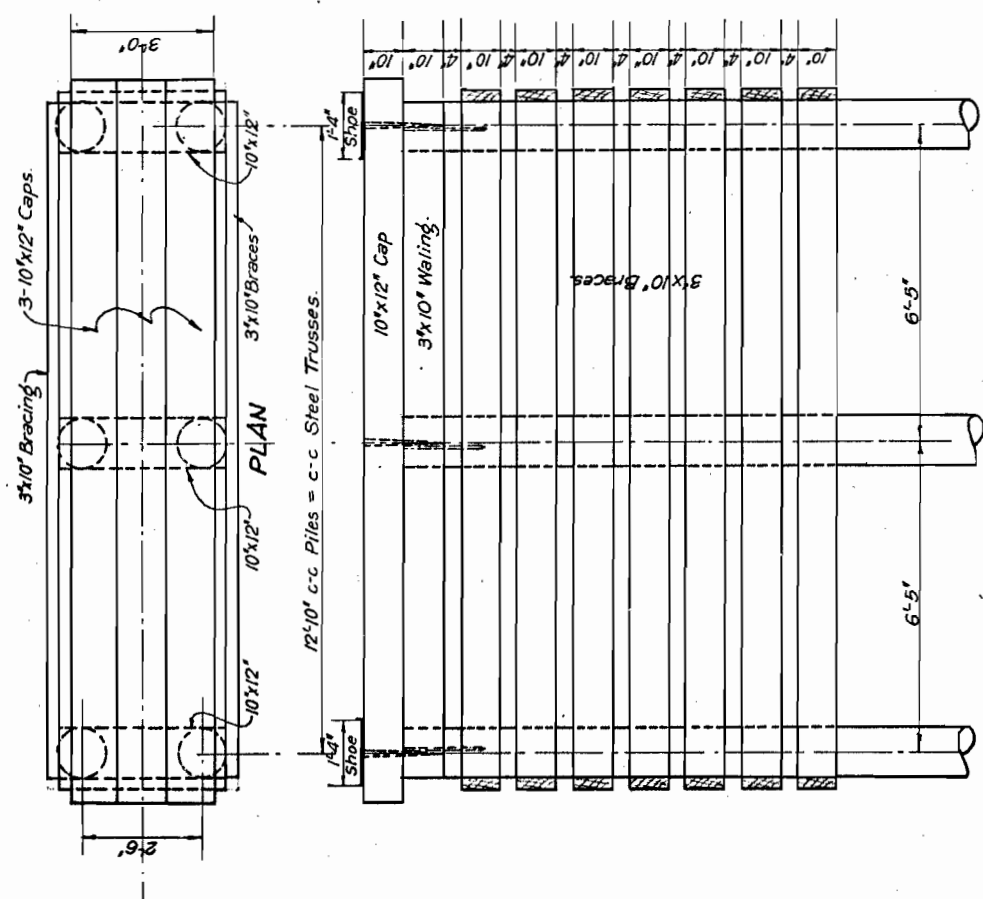


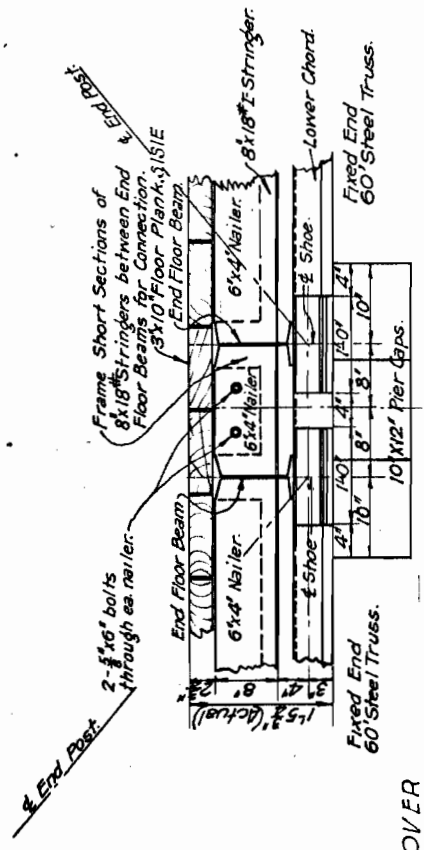
18" x 18" Galvanized sheet metal #28 gage - placed over tops of all piles and bent down as shown by dotted lines.



DETAIL OF SHEET METAL COVER OVER TOPS OF ALL PILES

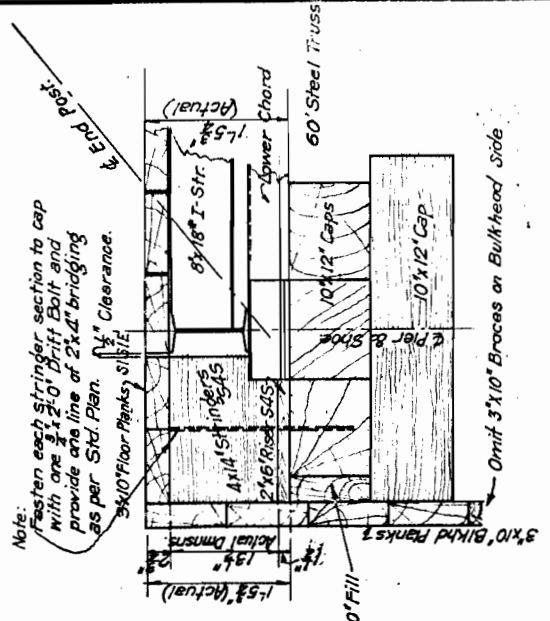


ELEVATION



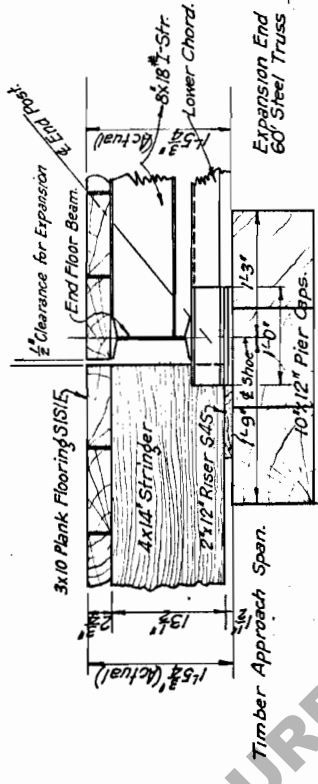
DETAIL OF CONNECTION-2 STEEL SPANS.

Scale: 1/4" = 1'-0"
Extra Lumber Required:
Creos. Lbr. (Nailers) = 7 Ft. B.M.
Unfr. Lbr. (Floor Plank) = 30 Ft. B.M.



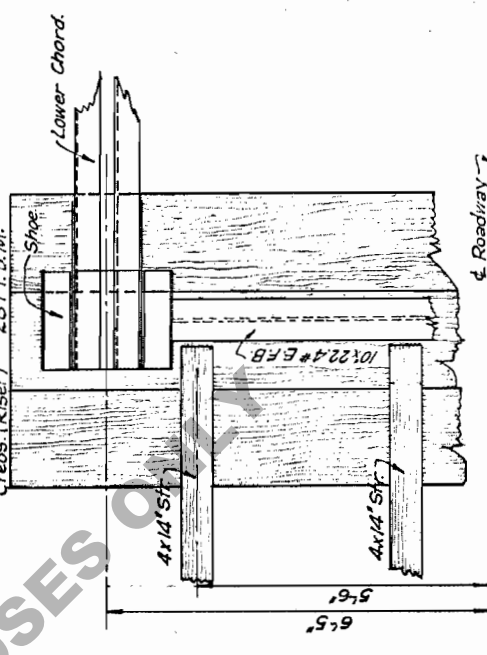
DETAIL OF METHOD OF BUILDING UP PIER FOR BULKHEAD WHERE STEEL DOES NOT CONNECT WITH TIMBER PANEL.

Scale: 1/2" = 1'-0"
Extra Lumber Required:
Creos. (Stringers, Fill, Bridging, Rise) 100 Ft. B.M.
Unfr. (Flooring) 60 Ft. B.M.



ELEVATION.

Scale: 1/2" = 1'-0"
Extra Lumber Required:
Creos. (Riser) 28 Ft. B.M.



PLAN

DETAIL OF CONNECTION-TIMBER SPAN & STEEL SPAN.

BILL OF MATERIAL - ONE PIER WITHOUT BRACES

NUMBER	SIZE	NO. FT. B.M.	LOCATION
3	10' x 12' x 15'-0"	450	Caps
3	10' x 12' x 3'-6"	105	Caps
2	3' x 10' x 14'-0"	70	Walings
Total			625

6 Creosoted Timber Piles Hardware 50# (Approx)
Note: Extra Quantities shown to be added where necessary.

BILL OF MATERIAL FOR 3' x 10' BRACES

HEIGHT - TOP OF CAPS TO GROUND OF BRACES	NO. LINES	NO. PIECES	NO. FT. B.M.	TOTAL NUMBER	HARDWARE POUNDS
4	2	4	4	175	8
6	4	8	8	350	8
8	5	10	10	438	10
10	7	14	14	613	14
12	9	18	18	787	18
14	10	20	20	876	20
16	12	24	24	1050	24
18	14	28	28	1226	28
20	16	32	32	1400	32

STANDARD PLAN OF TIMBER PIER AND CONNECTION DETAILS FOR LIGHT STEEL & TIMBER BRIDGES

LOUISIANA HIGHWAY COMMISSION
BATON ROUGE, LA.
Scale: 1/4" = 1'-0" Except as noted
Aug. 1927